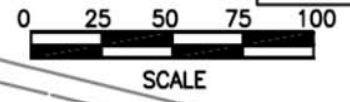
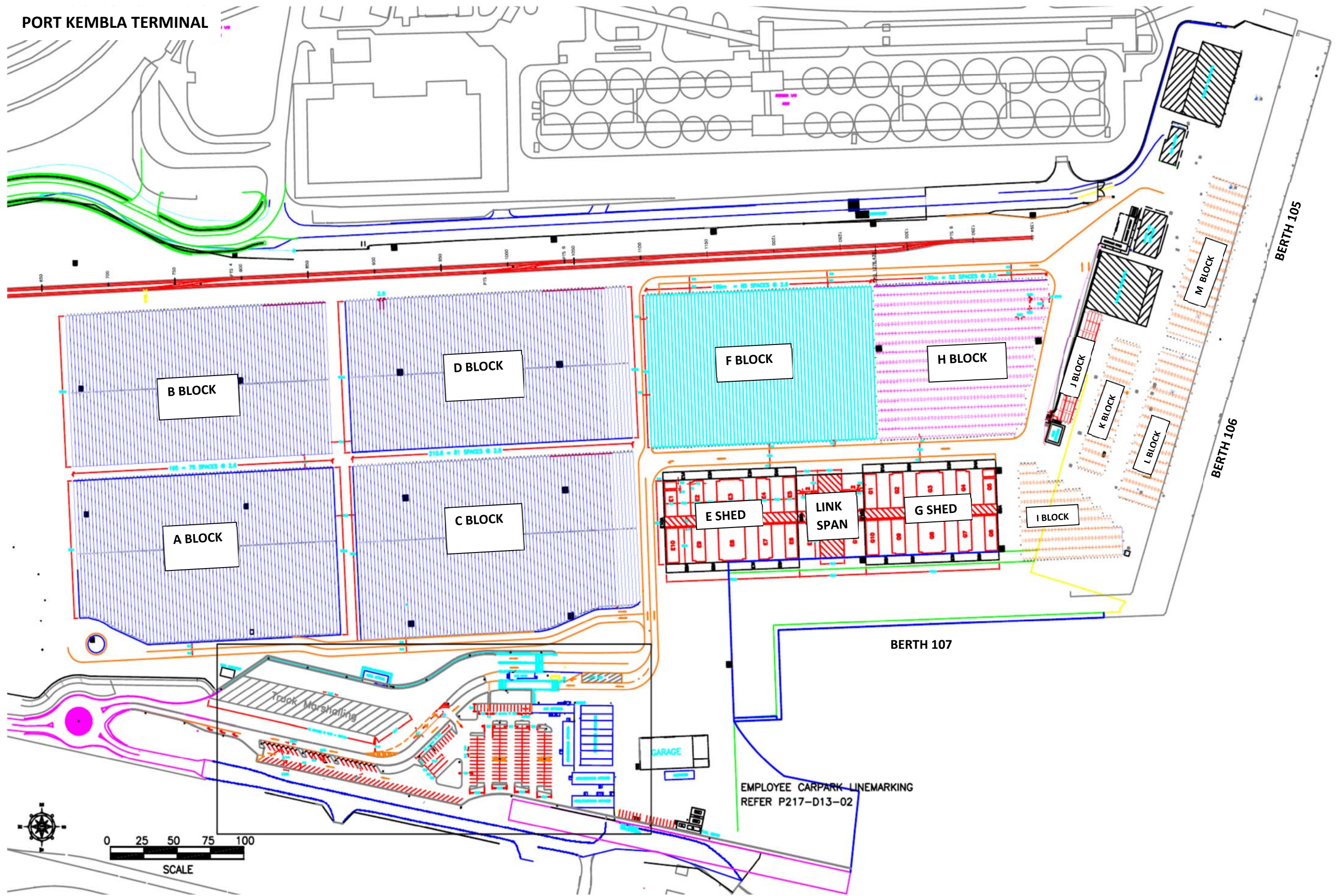


PART B: TERMINAL LAYOUT PLAN FOR EACH TERMINAL

PORT KEMBLA TERMINAL



EMPLOYEE CARPARK LINEMARKING
REFER P217-D13-02

Track Marshalling

GARAGE

BERTH 107

BERTH 106

BERTH 105

B BLOCK

D BLOCK

F BLOCK

H BLOCK

A BLOCK

C BLOCK

E SHED

LINK SPAN

G SHED

I BLOCK

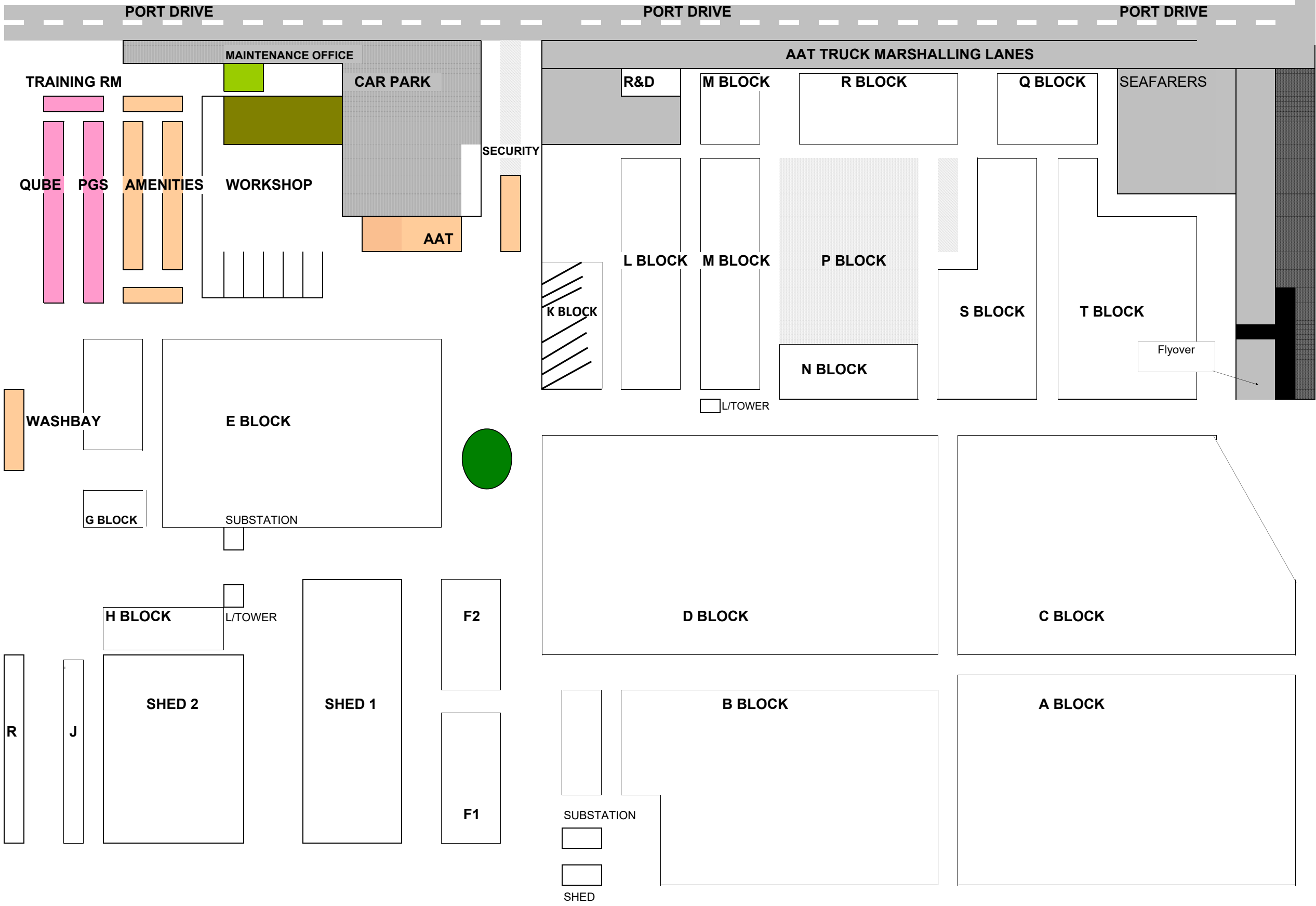
J BLOCK

K BLOCK

L BLOCK

M BLOCK

AAT FISHERMAN ISLANDS - YARD LAYOUT

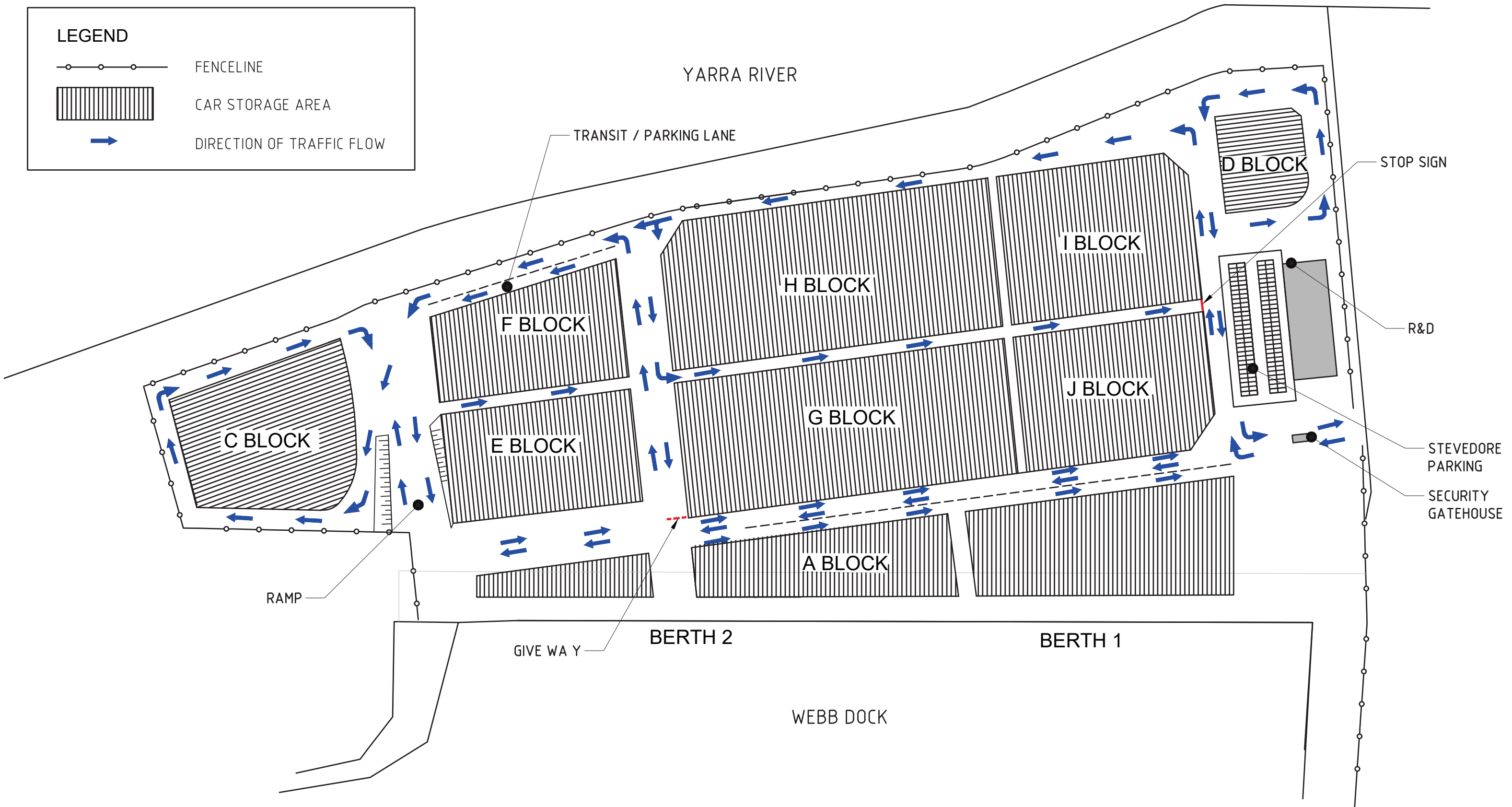
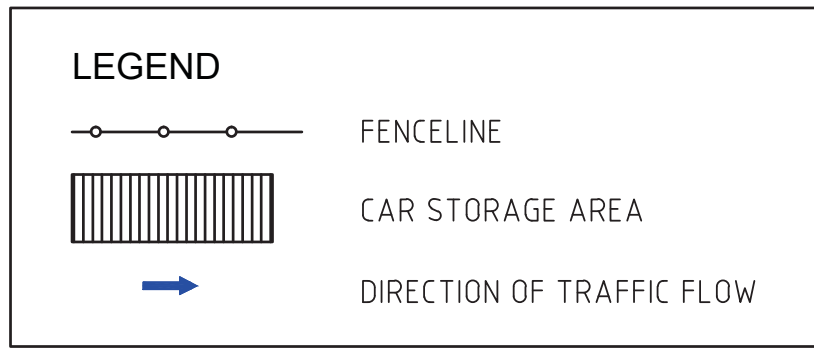


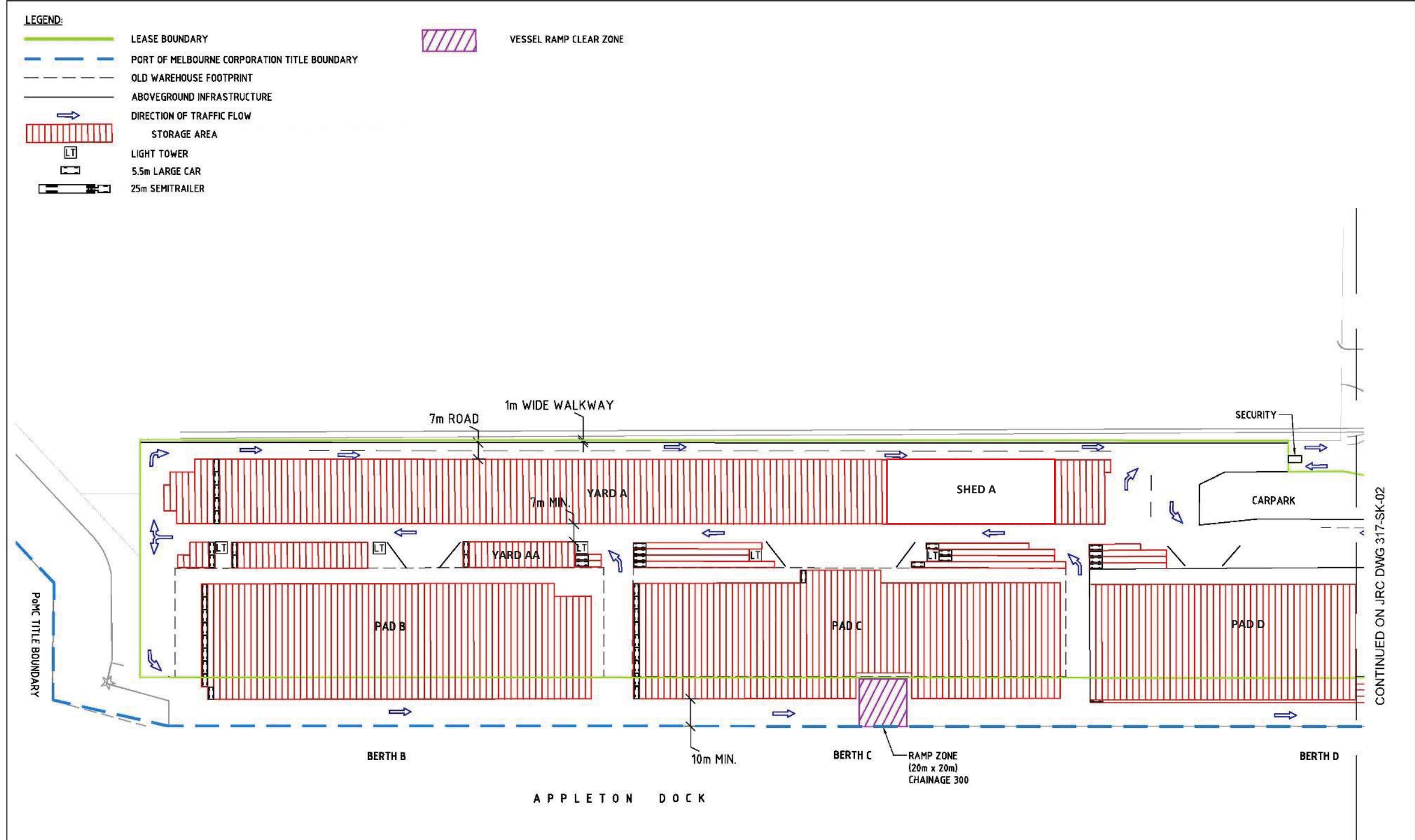
BERTH 3

BERTH 2

BERTH 1

WEBB DOCK WEST TERMINAL





CONTINUED ON JRC DWG 317-SK-02

REV	DATE	REVISION DETAILS	BY	Ver.	App.
C	08/02/14	CAR SPACES REMOVED AND SIZE ALTERED	JO	CB	DM
B	21/01/14	PAD B RAMP AMENDED, CAR PARKING SPACES REMOVED	JO	CB	DM
A	14/01/14	DRAFT	JO	CB	DM
REVISIONS AND ISSUES					

Prepared By	JQ	Signed	14/01/14	Scale	A3
Verified By	CB	Signed	14/01/14		
Approved By	DM	Signed	14/01/14		
Horizontal Datum	MGA (GDA 94)				
Vertical Datum	N/A				



Client:

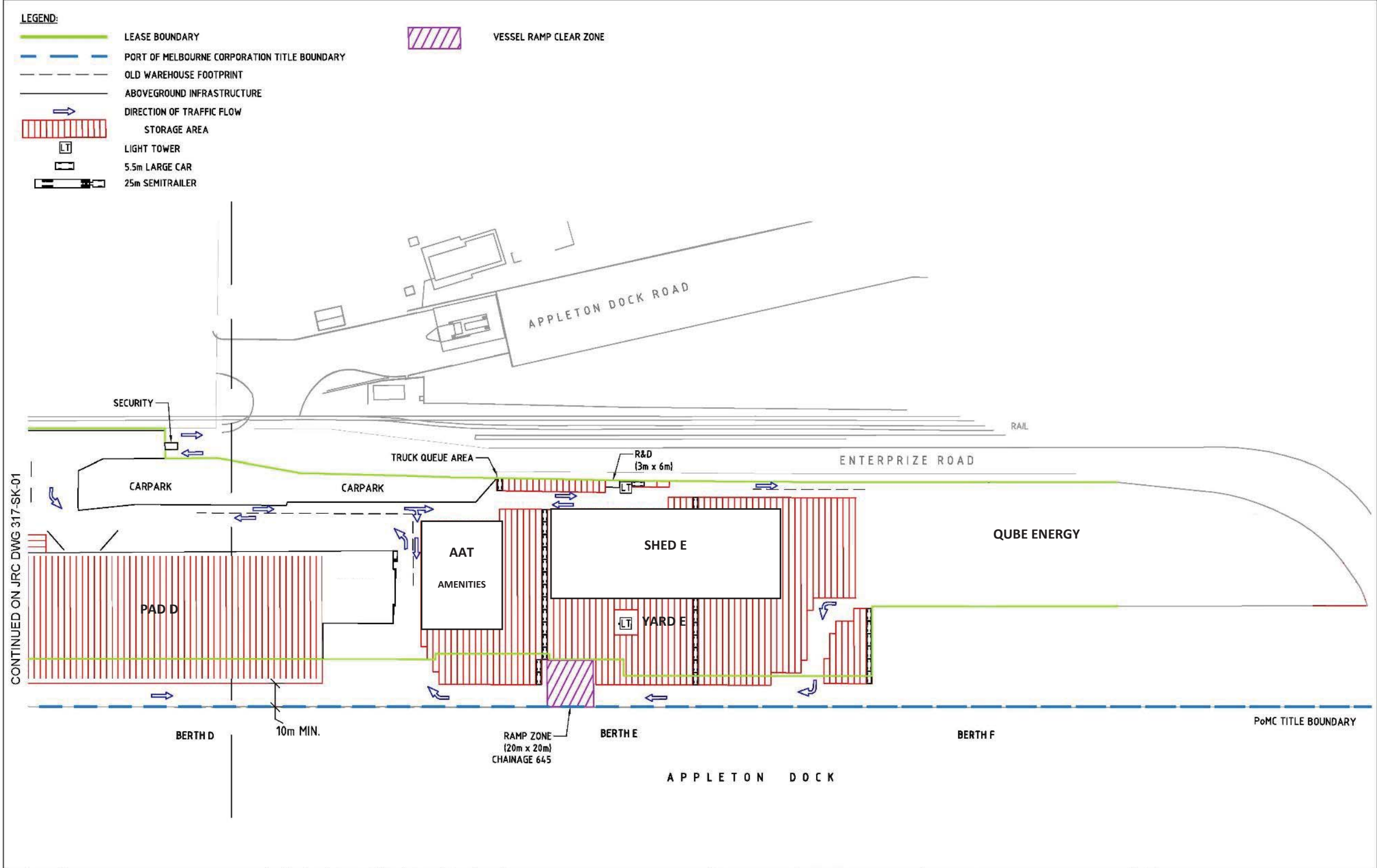


JRC James Rose Consulting
 ABN 64 175 064 511
 Unit F21, 1-15 Barr Street
 BALMAIN NSW 2041
 PH 02 9555 8588
 FAX 02 9555 8599
 mail@jamesrose.com.au
 www.jamesrose.com.au

Project: AAT APPLETON DOCK

Drawing Title: OPERATIONAL LAYOUT (SHEET 1 OF 2)

Status	Draft	Project No.	317	Drawing No.	317-SK-01	Rev.	C
© James Rose Consulting							



REV	DATE	REVISION DETAILS	BY	Ver.	App.
REVISIONS AND ISSUES					

Prepared By	Signed	Date	Scale
JQ	CB	14/01/14	1:1500
Verified By	Signed	Date	
CB	DM	14/01/14	A3
Approved By	Signed	Date	
DM	JQ	14/01/14	
Horizontal Datum	MGA (GDA 94) ZONE 55		
Vertical Datum	N/A		

Client:




JRC James Rose Consulting
 ABN 64 175 064 511
 Unit F21, 1-15 Barr Street
 BALMAIN NSW 2041
 PH 02 9555 8588
 FAX 02 9555 8599
 mail@jamesrose.com.au
 www.jamesrose.com.au

JRC James Rose Consulting
 ABN 64 175 064 511
 Unit F21, 1-15 Barr Street
 BALMAIN NSW 2041
 PH 02 9555 8588
 FAX 02 9555 8599
 mail@jamesrose.com.au
 www.jamesrose.com.au

Project: AAT APPLETON DOCK
 Drawing Title: OPERATIONAL LAYOUT (SHEET 2 OF 2)
 Status: Draft
 Project No.: 317
 Drawing No.: 317-SK-02
 Rev.: C